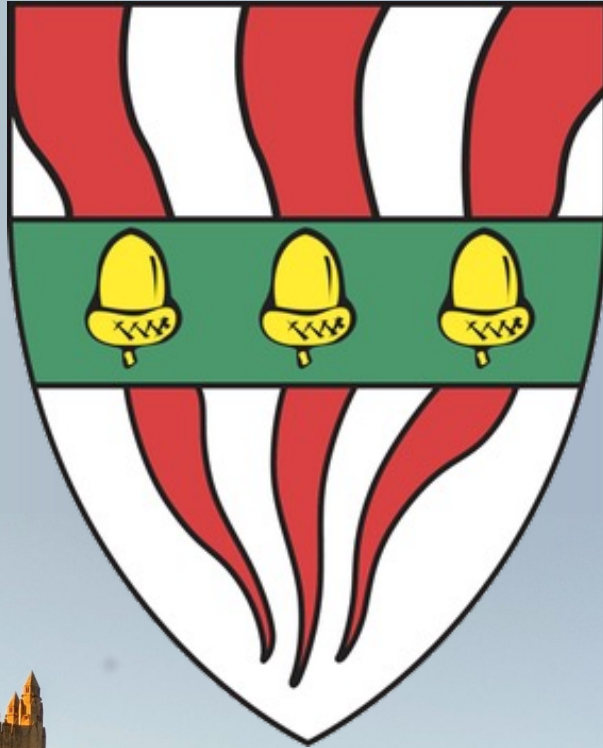


SILLIMAN COLLEGE

CLASS OF 2027 MANUAL





Welcome to Silliman College, Class of 2027!

Congratulations on becoming part of Yale's best residential college. We are so excited to welcome you as the newest members of our Silliman family! We can't wait to introduce you to all Silliman has to offer.

This Silliman College manual will provide you with lots of useful information that you can use to learn more about life in Silliman before you arrive. We're excited for you to experience all the amazing spaces and events that Silliman has to offer. The HoC office welcomes any ideas you have to make life in Silliman even more amazing.

We look forward to sharing memories over the next four years together!

In Sillilove,

HoC Baskin-Sommers and the entire Silliman Family

Table of Contents

Silliman 101 & History	4-5
Meet the Silliman Community	6-18
Our Silliman Spaces	19-32
Our Silliman Traditions	33-38
Silliman Rules & Important Information	39-42





Silliman College 101

Silliman College is one of fourteen residential colleges at Yale where students live, eat, and participate in intellectual, artistic, and social activities. Each college is a cohesive community with its own character and traditions, but it's universally acknowledged that Silliman is the best residential college at Yale.

Silliman is the largest residential college, with our courtyard taking up an entire city block. Whereas some other colleges house their first-year students on Old Campus, first-year students in Silliman College enjoy the privilege of living in Silliman.

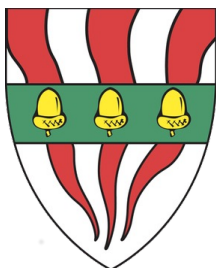
But Silliman College is more than just a lovely place on campus. Silliman is a vibrant and diverse community. In addition to Silliman students, the college also houses our Head of College, our Dean, as well as resident fellows.

The extended Silliman community also includes hundreds of members of the faculty, staff, and administration who serve as Fellows of Silliman. Silliman Fellows are invited to advise students and participate in college activities. We also have an amazing group of Graduate Affiliates, graduate and professional students, who are part of our community and run a number of events in the college.

Through participation in college activities, conversations in the dining hall, and a wide variety of social activities, students create the intellectual and cultural atmosphere that is the foundation of college life.

Silliman History

Silliman College opened in September 1940 and was the last of the original ten residential colleges. Our namesake is Benjamin Silliman (1779-1864) Yale Class of 1796. Silliman was one of the pioneers of American science. Officially Yale's first science professor, Silliman began teaching natural sciences in 1802. Silliman began the study of mineralogy at Yale, played a leading role in the foundation of the Yale Medical School and the Peabody Museum. He also created a scientific periodical called the *American Journal of Science* which is still published today. In 1852, Silliman founded the Yale School of Engineering, a pioneering event in professional scientific education in the United States.



The colors in the Silliman college seal refer to the four elements of the ancient philosophers: red represents fire; white represents air and water; and green represents the earth. Our shield also carries the golden acorns from the family crest of Frederick W. Vanderbilt, Yale Class of 1876, whose bequest funded Silliman's construction. In keeping with the theme of the elements, we selected the salamander as our college symbol because of its legendary associations with fire. We lovingly refer to all our students as Sillimanders.



Meet the Silliman Community



HoC Baskin-Sommers

Professor ARIELLE BASKIN-SOMMERS is the Head of College (HoC) of Silliman. Dr. Baskin-Sommers is a professor in the Department of Psychology, with affiliations in the Psychiatry Department, Yale Law School, and the Wu Tsai Institute. She's also a licensed clinical psychologist. Dr. Baskin-Sommers teaches several popular classes, including *The Criminal Mind*. She is the director of the Mechanisms of Disinhibition Lab and the Adolescent Brain and Cognitive Development Study. Several undergraduates, including Sillimanders, work on her projects. In 2019, her contributions to interdisciplinary instruction were recognized by Yale through the Poorvu Award for Excellence in Teaching.



Outside the classroom, HoC Baskin-Sommers is an avid television fan, particularly of *The Real Housewives* franchise, loves basketball (mostly watching now, but she used to play), and belts out (off-key) songs while riding her Peloton. Dr. Baskin-Sommers also has an amazing Bernedoodle named Luna (5 months)— who's very excited to meet all of you soon.



Dean Tycie Coppett



DEAN TYCIE COPPETT serves as our residential college Dean. Dean Coppett received her PhD from the University of Georgia (UGA) in Workforce Education. Prior to coming to Yale, Dean Coppett was a First-Year Senior Proctor of Harvard College, a First-Gen Low Income advocate at Harvard, and the Director of Master's Studies at the Graduate School of Education at Harvard. In recognition of her contributions as a gifted adviser, Harvard awarded Dean Coppett the Star Family Prize for Excellence in Advising and the John R. Marquand Award for Excellence in Advising as a first-year proctor.



Dean Coppett was on UGA's first women's track and field team to win an SEC Championship. Dean Coppett enjoys traveling, CrossFit, cooking (cheesecake in particular), binge watching thriller and suspense movies on Netflix, puzzles, board games, and musicals.



Silliman Resident Fellows



KASSANDRA HARO is the Program Administrator and caretaker of Handsome Dan XIX, also known as Kingman. She was a student in Berkeley College who graduated from Yale in 2018 with a degree in Political Science. As an undergrad she was a campus tour guide, an admissions office senior presenter, an NROTC midshipman, and worked at the Yale Interdisciplinary Center for Bioethics. She has worked at the Yale Visitor Center in a professional capacity since 2018 as the center's tour coordinator. As a native of Arizona, Kassandra loves hiking, cacti, and discussing the merits of dry weather. She also loves tea, cold brew, and Venezuelan arepas.

HANDSOME DAN XIX, aka KINGMAN, is the official Yale Mascot. Kingman is named after the late Yale President Kingman Brewster. He loves meeting new people, playing with his best friend Heidi, and eating peanut butter. Kingman would love if you joined him during playtime in the Silliman courtyard. His favorite games are hide and seek and tag. He is very excited to be surrounded by Yale students and get all the pets and cuddles he was promised when he signed on to be Handsome Dan XIX and a resident of Silliman College.



Silliman Resident Fellows



FERENTZ LAFARGUE is Yale College's Associate Dean for Residential Life. Dean Lafargue earned his Ph.D. in African American Studies here at Yale.

SOPHIA LAFARGUE is the Democratic Staff Director for the U.S. House of Representatives Committee on Foreign Affairs and splits her time between New Haven and Washington D.C. Ms. Lafargue earned her BA in English Literature from Queens College, CUNY and her MA from Harvard University's Graduate School of Education.

Ferentz and Sophia's daughters Teddy and Ella are entering seventh and fourth grades, respectively. You'll likely see Teddy and Ella zipping by on their way to swim, piano, basketball, or soccer practices. The Lafargue's younger son, Harrison completed high school at Notre Dame High School in West Haven and is now a Communication Major entering his junior year at Morehouse College in Atlanta. Their eldest son Ian resides in Bowie, Maryland and is the Director of Polling and Analytics at The Hub Project where he oversees polling operations for the Hub and Navigator Research.



Silliman Staff

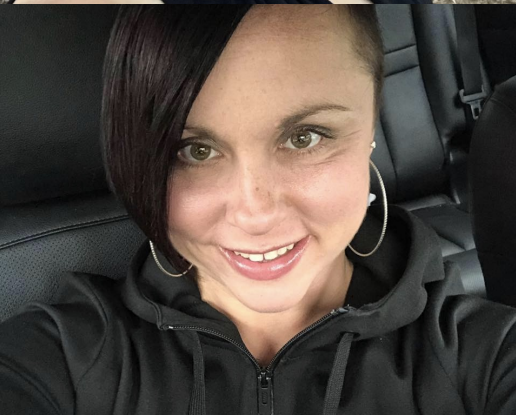




SERGIO GONZALEZ is the Silliman Operations Manager (OM) extraordinaire and your go-to for all things Silliman. Sergio has a B.A. from The College of the Holy Cross. Always up for a challenge, Sergio thrives in hearing your ideas for making our college amazing and bringing those ideas to life. Take your biggest ask and throw it in his direction, then watch him find a way to make it happen.



DEANNA BRUNSON is the Administrative Assistant to HoC Baskin-Sommers. Deanna is available in the Silliman HoC Office or via email for any of your questions. When not in the office, she stays busy being the cheer mom to her daughter Taylor's cheerleading team and loves talking with her son Sherman about graphic design and fashion. Deanna travels to Pittsburgh twice a year to watch the Steelers play with her husband Ben, they also enjoy walks with their two dogs, Zeus, and Thor.



ASHLEY NESMITH is the Administrative Assistant to Dean Coppett. If you need to set up a meeting with Dean Coppett, just drop Ashley a line via email. Ashley lives with her husband and two kids and loves all things Justin Timberlake.



CARA VO is the Silliman Service Assistant. Cara creates delicious treats & builds amazing memories for Silliman students through all our events in the college. When not at work, you can find her enjoying a CT State Park, supporting the local CT music scene, curled up with her cats, or at a Renaissance Festival.

Silliman Frocos and Other Community Members





First-year counselors (aka FROCOS) are seniors in Silliman who help first-year students adjust to the academic, social, and cultural life of Yale. Each first-year student is assigned a specific Froco, but you can reach out to any of the Frocos on the team.

The Silliman Class of 2027 Froco Team:

- Aster Aguilar (Head Froco)
- Rachel Brown
- Ellie Burke
- Ethan Coyle
- Michael Lee
- Annie Lin
- Mira Raju
- William Salaverry
- Madelyn Stewart
- Kevin Wang



Other Community Members



PEER LIAISONS (PLs) are students who help connect first-year students to the wealth of support and programming initiatives based in the LGBTQ Resource Center, the University Chaplain's Office, the Office of International Students and Scholars, the Afro-American Cultural Center, the Asian American Cultural Center, and the Native American Cultural Center.



COMMUNICATION & CONSENT EDUCATORS (CCEs) are Silliman students working together to foster a more positive sexual and social climate on campus. They aim to end sexual violence by transforming our corner of contemporary culture into one where respect, mutuality, and mindfulness are the norms.



Silliman GRADUATE AFFILIATES (GAs) are graduate and professional students who contribute to the social life of the college. Our Silliman GAs have been involved in many aspects of residential college life, from cultural and social events to photography, pottery, art and drama, poetry readings, music, language tables, science groups, career advising, to bread baking. Our GAs also host a number of field trips, like visits to New York City and sunset hikes in East Rock Park.

Other Community Members



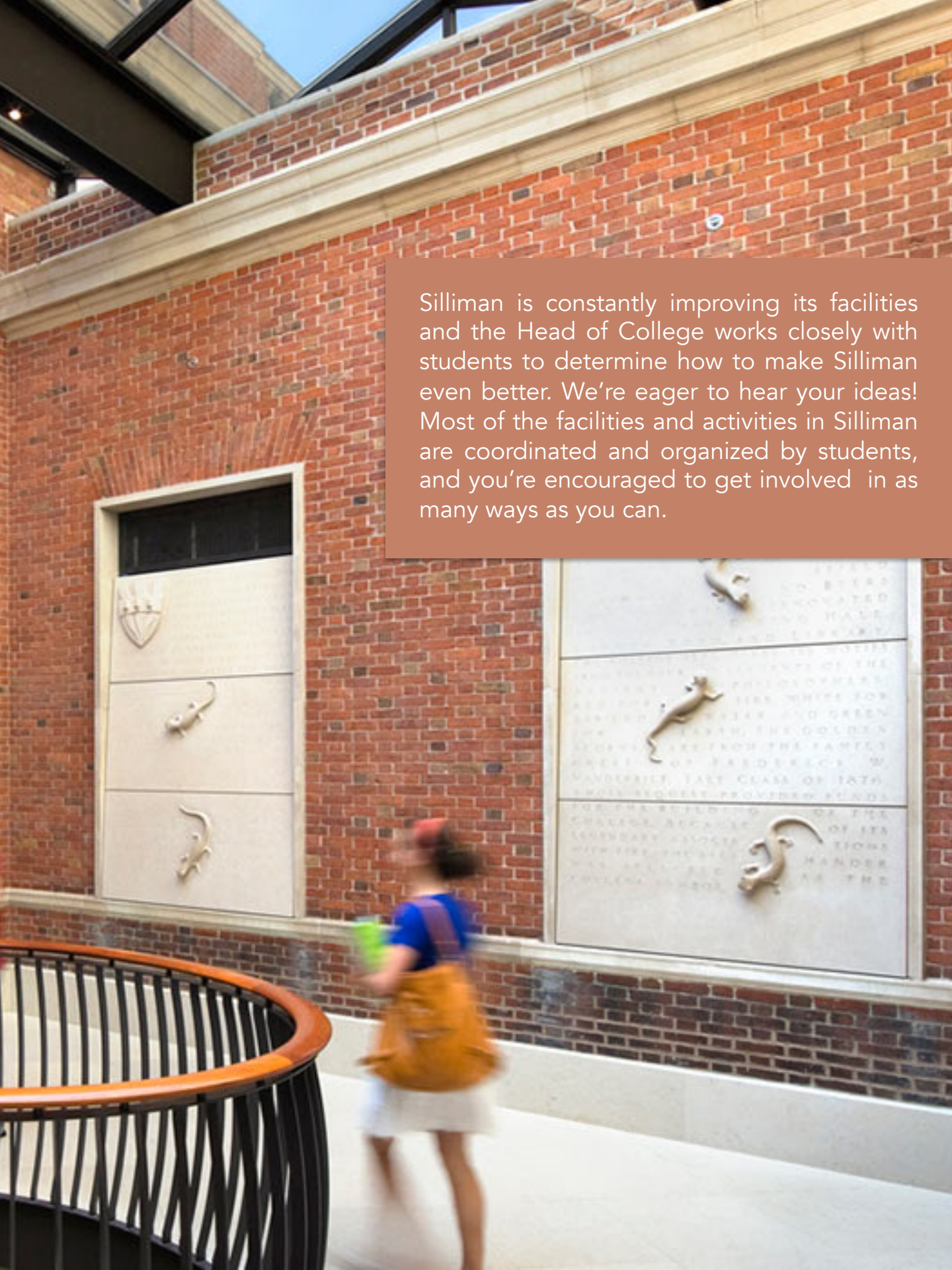
ELIZABETH SLEDGE is the Silliman Writing Tutor. The writing tutor is a free resource that's available to help students with all types of writing, but especially with course papers. She can assist at every stage of the writing process, from an outline to the final product. Visit her with your papers even if you do not have writing problems; even very talented writers can benefit. Her office is on the fourth floor of Byers Hall and her office hours will be posted in September.



Silliman has over a hundred COLLEGE FELLOWS — faculty, staff, distinguished members of the New Haven community. The Fellowship offers the faculty an opportunity for greater contact with students. A Silliman Fellow can serve as your college advisor. They also give seminars, join students for social occasions and IM sports, and participate in many events in the College. Invite a Fellow to join you for a meal — he/she/they will probably be delighted to accept.

Silliman College Spaces





Silliman is constantly improving its facilities and the Head of College works closely with students to determine how to make Silliman even better. We're eager to hear your ideas! Most of the facilities and activities in Silliman are coordinated and organized by students, and you're encouraged to get involved in as many ways as you can.



The Silliman Dining Hall



The SILLIMAN DINING HALL is the largest and best at Yale. For many of you, the dining hall will become your dining room away from home and your favorite spot on campus. The Silliman Dining Hall Staff is excited to show off their skills and keep you well-fed all year long.

MAUREEN O'DONNELL manages the Silliman Dining Hall. She is here to help you with any and all food related questions, and can be reached in her office at 203-432-0440.

The Silliman Courtyard





The soft grass, old beech trees, tree swing, chess table, Adirondack chairs, and picnic tables make the Silliman Courtyard one of the glories of the college, enjoyed by all. Impromptu games of frisbee, football, spikeball, volleyball, and even cricket, have all been known to take place here.



The Silliman Garden



The SILLIMAN GARDEN is part of our SM Sustainability Initiative. Our edible garden was developed with the help of our former grounds manager, Joe Signore, and our former resident fellows Maytal and Dan. Every spring, we plant corn, pumpkins, tomatoes, and other veggies to harvest once students return in the fall. Silliman also has a POLLINATOR GARDEN with plants and flowers that attract local bees, butterflies, and other pollinators. Our pollinator garden was made possible by a generous donation from the friends and family of William Spry II.



The Acorn Cafe



The ACORN CAFÉ is Yale's first student-run coffee shop. The Acorn is on the 4th floor of Byers Hall. The cafe offers specialty ELEVA brand farmer-direct and sustainably-sourced coffee, organic teas, homemade granola, milkshakes, and baked goods. The Acorn is now a Platinum-Certified Green Workplace from the Yale Office of Sustainability.



The Good Life Center

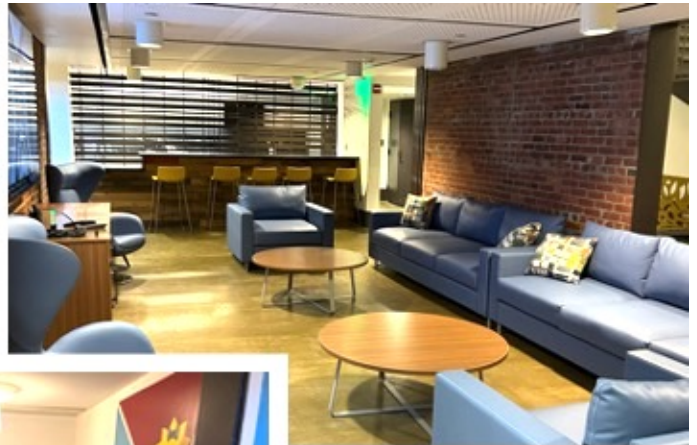
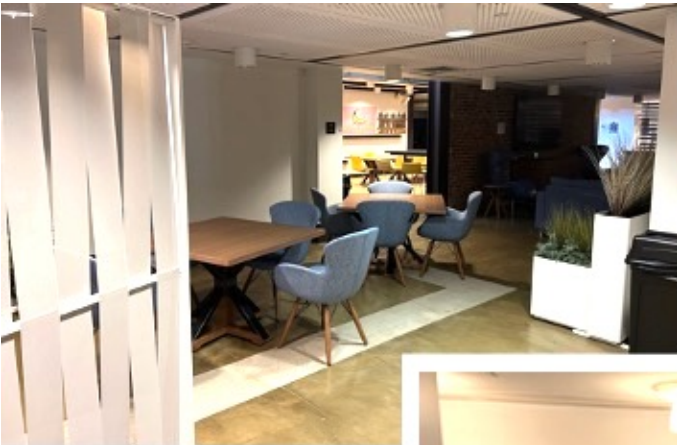


The GOOD LIFE CENTER (GLC) was founded by our former HoC, HoC Santos, as a resource for increasing student well-being, spreading good vibes and providing a refuge from the daily Yale grind. The GLC is open to all students on Yale's campus and serves as a place to meditate, play, create art, or do nothing at all. The main GLC is now in the Schwarzman Center (just across the street from Silliman), but Silliman is lucky enough to have this annex location in Byers Hall.



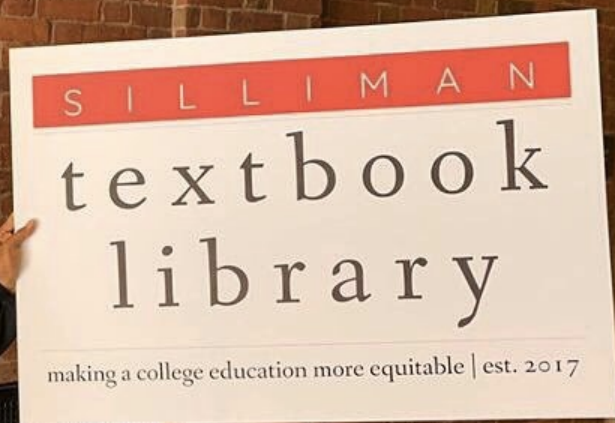
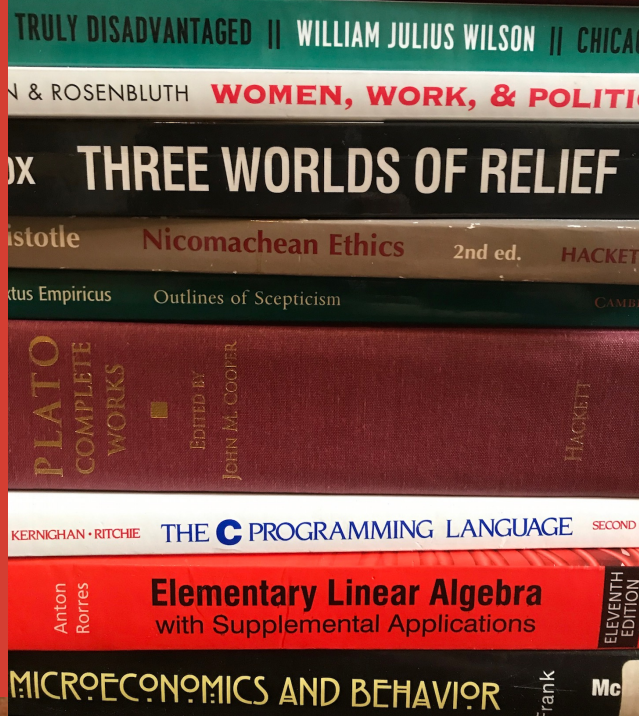
The Buttery

The SILLIMAN BUTTERY is your late-night hangout spot. The Buttery boasts a large screen television, assorted games, a Bluetooth music system, and a student run late-night eatery with foods to satisfy all your cravings (chicken tenders, mac-n-cheese, and mozzarella sticks). The Buttery area also has an attached GAME ROOM with pool tables and other table games. The Buttery restaurant is open from 10pm-1am, Sunday-Thursday.



The Silliman Textbook Library

Silliman is committed to doing everything we can to support Sillimanders from first generation low-income (FGLI) backgrounds. In addition to our FGLI STUDENT COORDINATOR—a paid position dedicated to thinking about FGLI student needs, Silliman also launched a new resource at Yale to help FGLI students access textbooks and other educational resources that are often prohibitively expensive: THE SILLIMAN TEXTBOOK LIBRARY (SMTL). The SMTL is an initiative developed by a former Sillimander Kushal Dev '20 to combat educational inequity on Yale's campus. The SMTL collected over 800 textbook donations from Yale students which are now available for use by FGLI students. The SMTL is near the Sillibrary, but you can check out what books are available online.



Other Silliman Spaces



The COMMON ROOM on the second floor of Byers Hall is a wonderful space for students to study, read, play the piano, and gather. The Common Room houses two beautiful Steinway concert grand pianos, large comfy chairs and sofas, spacious coffee tables, and enormous soft rugs. As members of this community, we ask you to do your part to clean this space clean and refrain from eating or drinking items that can stain or damage the surfaces.



The SILLIMAN LIBRARY or "Sillibrary" is located on the third floor of Byers Hall. It offers a quiet study space and a beautiful reading room. It houses books and reference materials and is open for all your late-night paper or problem set needs.



There also lots of open STUDY SPACES in the SILLIMAN BUTTERY, around the ACORN CAFE, on the third floor of BYERS, as well as in our courtyard. We encourage you to find your own personal spot that works for you.



There are also opportunities to use the SILLIMAN HoC HOUSE, located on the Wall Street side of the courtyard. HoC Baskin-Sommers opens her home up for students studying during midterms and finals. She also allows students to use some of the spaces (e.g., catering kitchen), if available.

Other Silliman Spaces



The DANCE STUDIO is a space for yoga, barre, dance classes, and more. The Dance Studio has a sprung floor and a barre bar, as well as lots of equipment needed for yoga and HIIT classes. The Dance Studio is located in the basement of Byers Hall adjacent to the Game Room.



THE SILLIDOME (BASKETBALL COURT) is a half-court basketball court located in the basement of Byers Hall. Students are welcome to play during open hours. Be sure to wear sneakers!



SILLIFLICKS is Silliman's movie theater. Located in the basement of Entryway C, Silliflicks boasts stadium seating, a giant projection-screen, a full array of cable channels, and a collection of several hundred movies on DVDs. Silliflicks is available to all Silliman students, as long as they follow rules posted on the SM website. See our website for details about booking this space.



The SILLIGYM is in the basement of Byers Hall. The Silligym includes weight and cardio machines, free weights, yoga mats, strength training equipment, and more. An easy way to get your workout in without having to go all the way to Payne Whitney.

There are two LAUNDRY ROOMS, one in the basement of Entryway M, and the other on the first floor of Entryway F. They are operated by and maintained by the Student Laundry Agency (203-432-1889).

Silliman Extracurricular Spaces



The ART STUDIO is fully stocked with art supplies. The art studio is attached to the SILLIMAN BOOK BINDERY which has a set of book binding equipment so you can bind your own books and make your personal notebooks.



Silliman has four MUSIC PRACTICE ROOMS. Some of the practice rooms contain an upright piano, and state-of-the-art electronic gear. Keys to the Music Rooms are available in the Head of College Office. Contact the student aides to inquire about use of the Band Room. Please note that a fine is imposed on all students who do not return these keys at the end of the academic year.



The LUMRY-WENGERD SOUND STUDIO is a state-of-the-art sound studio made possible through the generosity of Loren and Amanda Wengerd SM '01, Rufus and Patricia Lumry, and the Silliman Parents Fund. It is the first studio of its kind ever constructed in a university. The studio is a room within a room, able to be tuned to perfect pitch, and suitable for all types of sound recording needs. Contact the aides to set up recording times.



MAYA'S ROOM is Yale's only student-run art gallery. Named in memory of Maya Hanway SM'82, the Gallery is located on the first floor of Byers Hall.

Silliman College Traditions



Silliman College Teas



The Head of College invites guests to the College to talk informally with students over tea at the Head of College residence. We have welcomed prominent persons from the worlds of art, photography, sports, literature, cinema, politics and science. Our guest list has included actress Allison Williams (pictured here), Jerry Greenfield (of Ben & Jerry's), Baz Luhrmann, Anna Quindlen, Kishore Mahbubani, Andrew Mondschein (acclaimed film editor) Ken Auletta (New Yorker columnist), Ken Starr, The Roots, Conan O'Brian, Martina Navratilova, Kurt Vonnegut, Michael Dukakis, Madeleine L'Engle, The Indigo Girls, Chris Bohjalian, Randy Fenoli (of Say Yes to the Dress), Bronson Pinchot, Rafi, and Denzel Washington.

Silliman Intramurals (IMs)





All students — regardless of ability — are invited to defend Silliman against other colleges in intramural competitions. Play something you are good at, or learn something new, having a blast in the process.





Fall sports include tennis, golf, football, cross-country, and ping pong. Winter sports include volleyball, soccer, basketball, broomball, inner-tube water polo, and squash. Spring sports include softball, dodgeball, soccer, badminton, and spike ball. The college that scores the most points in Intramural competition is awarded the prestigious Tyng Cup. Silliman is a THREE TIME Tyng Cup Champion! Let's do this Tyng, Class of 2027! Be sure to pick up your IM uniforms this fall!



SAAC

The SILLIMAN ADMINISTRATIVE & ACTIVITIES COUNCIL (SAAC) is the main event planning group in the college. All enrolled Sillimanders are invited to become members of SAAC and are entitled to attend meetings and vote. SAAC acts as a forum for the discussion of matters important to the Silliman community and allocates the Student Activities Fund. Come to the meetings to help plan these activities, or to suggest ones of your own. Council officers are elected each semester, and first-year students are especially encouraged to run for office. SAAC is a great way to get to know other Sillimanders, to discuss improvements to the college, and to eat free food.



SAAC organizes social events that take place in Silliman College throughout the year. SAAC has sponsored events such as annual Silliman dance, trips, a karaoke night, and our year-end carnival known as Sillifest.

Silliman Rules and Information





SM Rules & Information

ROOM KEYS: First-year room keys (and IDs) will be given to you when you arrive to campus. All students must return their room keys at the end of the year. A \$25 fine is imposed by the University for lost keys or failure to return keys at the end of the term.

EXCESSIVE NOISE: Amplifiers, stereos, radios, musical instruments, and the like should be used with consideration for other college residents. Quiet hours are in effect after 11pm Sunday-Thursday and after 1am Friday-Saturday. Violators risk disciplinary action, and persistent offenders may be required to vacate University housing.

PETS: Students are not allowed to keep pets in the college. The presence of any animal in student rooms constitutes a problem for public health and sanitation.

SMOKING: Yale is a smoke free campus. Smoking is not permitted anywhere in our Residential College, including student rooms, entryways, the courtyard, etc. Yale is committed to supporting a smoke-free campus.

SMOKE DETECTORS: As the first line of defense against fire, smoke detectors should be operating at all times. Never remove batteries from detectors. Tampering with smoke alarms or removing the batteries is punishable by a \$100 fine.

SECURITY: For your own safety, the HoC and the University Police strongly urge you to keep your room locked at all times. Entryway and basement doors and the four gates to the College should also be kept locked at all times; please do not prop doors open. Broken locks should be reported immediately to the Head of College Office.

INSURANCE: Yale University does not carry insurance on personal property and is not responsible for any items belonging to students. Insurance on property must be arranged privately.

SM Rules & Information

CUSTODIAL SERVICES: Our buildings are cleaned and maintained by the hardworking folks in our facilities department. MELISSA DEBIES-CARL, our Facilities Superintendent, supervises the staff who clean and maintain the entire College. All questions about maintenance, bathrooms, and furnishings should be directed to her email (melissa.debies-carl@yale.edu). For urgent repair needs, please call the Facilities hotline at 203.432.6888.

ROOM INSPECTIONS: During the year, the Fire Marshal periodically makes fire and safety inspections of rooms. For reasons of health and safety, students should maintain reasonable standards of cleanliness and order in their rooms.

PROPERTY DAMAGE: Occupants are responsible for any and all property damage within the suite, including damage caused by guests. Electrical space heaters, cooking equipment, microwave ovens, and other heavy-duty electrical appliances violate the fire code and are subject to confiscation by the Fire Marshal. Explosives, firecrackers, and firearms are prohibited.

RECYCLING & COMPOSTING: Yale is required by Connecticut law to recycle nine types of items, including office paper, newspaper, glass, cans and corrugated cardboard. Yale uses single-stream recycling. The Silliman HoC Office also has compost bins available for student use.

BICYCLE RACKS: Bicycle racks are located near the Wall Street, College Street, and Grove Street gates. Please do not store bicycles in the stairwells as this violates state fire laws. Bike storage and other items blocking stairwells and fire doors may be confiscated by order of the Fire Marshal.

SHIPPING AND RECEIVING: Packages should be sent to:
YOUR NAME (Silliman College) Barnes & Noble Student Package
Center 77 Broadway, Lower Level New Haven, CT 06511
You will receive an email once your package is ready for pickup.

Letters (USPS) can be sent to your student P.O. Box and should be addressed to: YOUR NAME, 206 Elm Street, P.O. Box: (Number), New Haven, CT 06520-(last four digits of your post office box #).



Important Contact Information

Silliman Head of College Office (1st floor Byers Hall)

HoC Baskin-Sommers	arielle.baskin-sommers@yale.edu	
Deanna Brunson	deanna.brunson@yale.edu	203-432-0702
Sergio Gonzalez	sergio.gonzalez@yale.edu	203-432-0708
Cara Vo	cara.vo@yale.edu	203-432-0181

Silliman Dean's Office (1st floor Byers Hall)

Dean Coppett	tycie.coppett@yale.edu	
Ashley Nesmith	ashley.nesmith@yale.edu	203-432-0701

Silliman Facilities

Melissa Debies-Carl	melissa.debies-carl@yale.edu	203-436-2194
Facilities Emergency Line		203-432-6888

Silliman Dining

Maureen O'Donnell	maureen.odonnell@yale.edu	203-432-0440
-------------------	--	--------------

For Emergencies

Yale Police and Fire Department	911
Yale Security (for lockouts after hours)	203-785-5555

Silliman Website: <https://silliman.yalecollege.yale.edu/>

